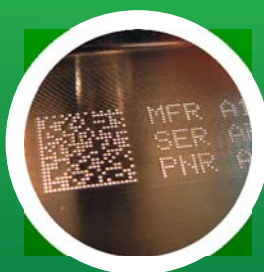


# InDot Integrated Dot Peen Marking Series

**PRYOR**  
MARKING TECHNOLOGY



[www.pryormarking.com](http://www.pryormarking.com)



# InDot: Integrated Dot Peen Range

Compact

Robust

## NEW: Compact InDot 50-25



### Features:

- Extremely compact: 92mm x 130mm (3.6 x 5.1") footprint
- Excellent marking area/foot print ratio
- 25% larger marking area than most compact machines
- No pivoting axis flat X/Y movement:
  - Consistent marking depth throughout marking area



## InDot FP Series

## Fast Pneumatic Series

- Unbeaten Speed
- High Dot Density (HDD)

**Marking Areas** Available:  
50x25mm (2x1")



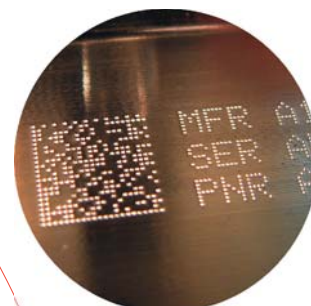
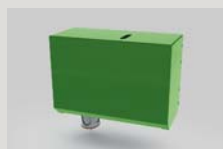
## InDot E Series

## Electromagnetic Series

- Electromagnetic - No air supply required
- Preferable method of marking Data Matrix
- Precision and consistency of individual dots
- **NEW:** Increased marking depth and amplitude

**Marking Areas** Available:

50x25mm (2x1")	150x150mm (6x6")
60x60mm (2.4x2.4")	300x150mm (12x6")
130x30mm (5.1x1.2")	



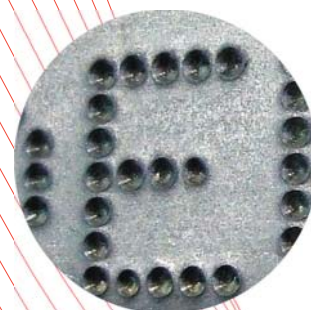
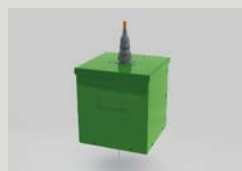
## InDot DP Series

## Deep Pneumatic Series

- Very Deep Marking
- Up to 0.9mm indentation in steel

**Marking Areas** Available:

60x60mm (2.4x2.4")
150x150mm (6x6")
300x150mm (12x6")



### About Dot Peen Marking:

Series of dots are indented into materials to form alphanumeric characters, logos or 2D Data Matrix codes. Permanently mark almost all engineering materials up to 62 HRC.

# Reliable

# Fast

# Easy to Install

## 3000 Controller Version

PC not required  
Large graphical display  
Full membrane keyboard  
Screen linked function keys



### Marking Features:

Fixed texts, variables, serial numbers, arc and angular, time/date, Data Matrix, logos, backward & forward marking, etc.

### Standard Communication:

PC/PLC/barcode reader/printer connection, text reception, uploads & downloads, select file, automation control, USB, RS232, Programmable 24V digital 8 Inputs/6 Outputs



### Available Options:

I/O extended to 16I/12O	Modbus-RTU
TCP/Ip Ethernet	Profinet
Profibus	EtherNet/IP
DeviceNet	EtherCAT
CANopen	Modbus-TCP
CC-Link	Sercos III
CompoNet	Bluetooth
ControlNet	

## USB Controller Version

Marking head permanently connected to a PC with MarkMaster software.



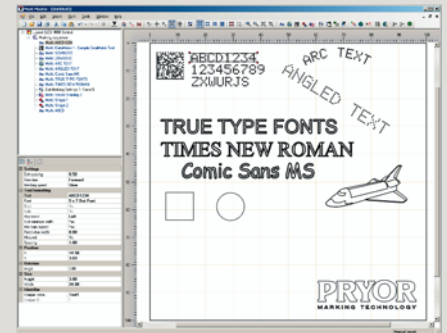
Drag, drop, scale, rotate graphical interface. Align, group marking blocks, show marking path.



Variables, serial numbers, time/date, Data Matrix, logo (.hpgl/.plt&.dxf)

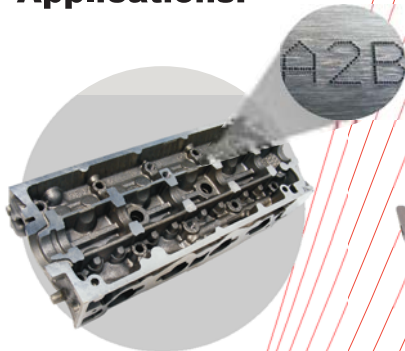
Query & write back to Excel, Access, SQL Server, My SQL etc, duplicate data checking and log data (history) (\*)

Supports all Windows© True Type Fonts (\*), including Chinese, Japanese, Korean (...) characters.

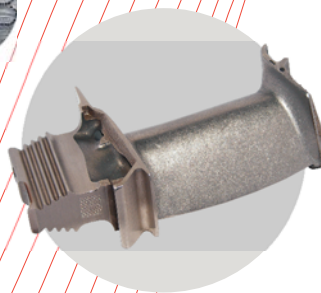


(\*) Requires MarkMaster™ Advanced software

## Applications:



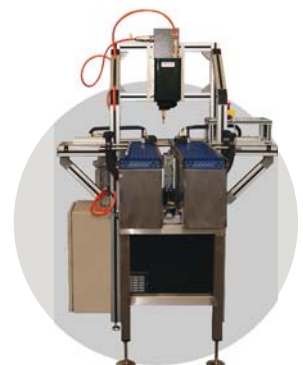
**Automotive** marking



**Aerospace** marking



**Key** marking



**Production Line**

## About Pryor Marking Technology:

Pryor Marking Technology manufactures the widest range of permanent marking systems along with its own Data Matrix readers, verifiers and traceability software solutions.

Our subsidiaries and distributors, in over 50 countries, design and support the most advanced standard and custom made identification machines, worldwide.

[www.pryormarking.com](http://www.pryormarking.com)



## Technical Specifications:

### Common Technical Info:

**Electrical Supply:** 100-230V / 200VA

**Frequency:** 50-60Hz

**Air Supply(DP&FP):** 6bars (87psi) Non

Lubricated Dry Air

**Head Cable:** 3m (9.8 ft) Robotic Cable

### Marking Area: (mm/in)

InDot 50-25 (2x1")

InDot 130-30 (5.1x1.2")

InDot 60-60 (2.4x2.4")

InDot 150-150 (6x6")

InDot 300-150 (12x6")

### Version Available:

FP	E	DP
○	○	
	○	
	○	○
	○	○
	○	○

Detailed Information and CAD files are available at [www.pryormarking.com](http://www.pryormarking.com)

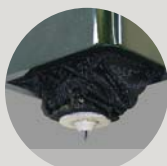


**Twin** Linear Guide Rails and bearing

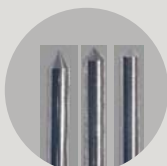
## Optional Extras:



Electric/Pneumatic Z-Axis



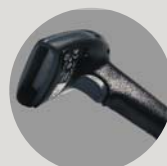
Protective Boot



Various Styli



Base & Column



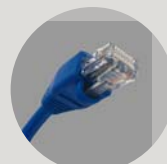
Barcode Scanner



Data Matrix Readers



I/O Extension



TCP/IP Module



6m & 10m Head Cable



Plastic Colour Mark



Start/Stop Box



Foot Pedal

## Alternative Dot Peen Machines:



**Portable** Machines



**Bench Top**



**Custom** Systems

## Other Technologies:



**Scribe** Marking



**Laser** Marking



**Electro-Chemical**  
Etching



**Manual & Press**  
Marking



**Traceability**  
Products

# www.pryormarking.com

**Pryor Marking Technology**  
Egerton Street  
Sheffield  
S1 4JX  
England

**Tel:** +44 (0)114 276 6044  
**Fax:** +44 (0)114 276 6890

**Email:** [enquiries@pryormarking.com](mailto:enquiries@pryormarking.com)  
**Website:** [www.pryormarking.com](http://www.pryormarking.com)

\* Twin linear guide rails on models 60-60, 150-150 and 150-300  
Model shown on front cover - InDot 50-25FP (with optional protective boot)  
© Pryor Marking Technology 2010 - ATAUG2010