

Quiet Operation

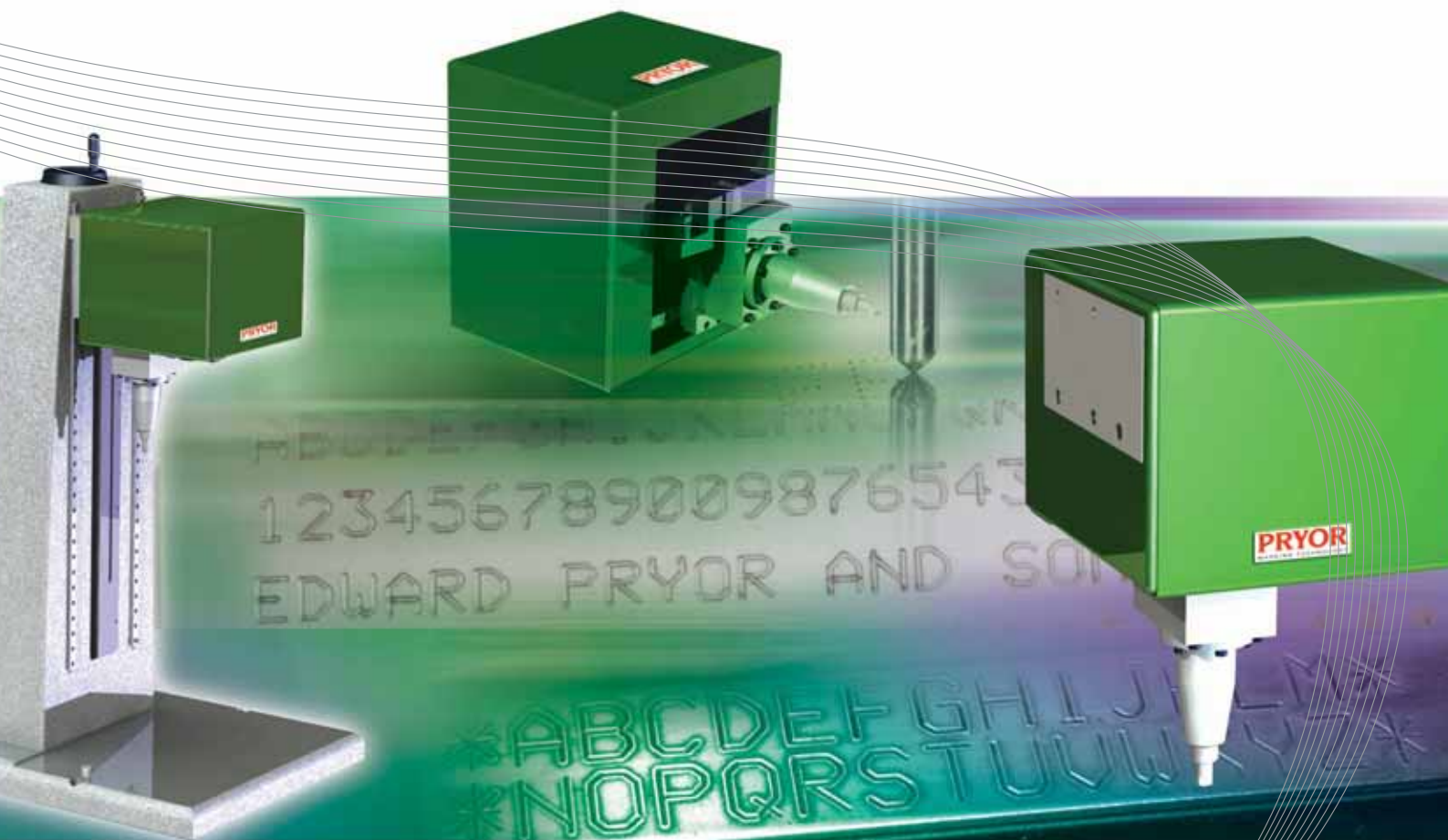
Continuous Line Characters

Shallow To Very Deep Marking

VIN Marking

PRYOR
MARKING TECHNOLOGY

Marktronic™ 3000 Scribing Range



Marktronic™ Scribing Product Range:

BenchScribe™: Benchtop, Column Mounted

Marktronic™ BenchScribe™ 60-60SP
Marktronic™ BenchScribe™ 100-100SP
Marktronic™ BenchScribe™ 150-150SP
Marktronic™ BenchScribe™ 300-150SP

InScribe™: Integrator:

Marktronic™ InScribe™ 60-60SP
Marktronic™ InScribe™ 150-150SP
Marktronic™ InScribe™ 140-40SDPH

intelligent marking solutions

Technical Specifications

(For more technical details please see our website)

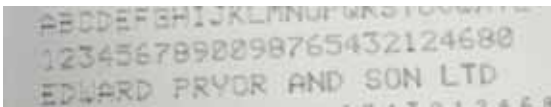
Marktronic™ 3000 Scribe Marking Range			
BenchScribe™	InScribe™	Marking Area	Stylus Available
60-60SP	60-60SP	60mm X 60mm	Diamond or Carbide
100-100SP	N/a	100mm X 100mm	Diamond or Carbide
150-150SP	150-150SP	150mm X 150mm	Diamond or Carbide
N/a	140-40SDPH	140mm X 40mm	Carbide
300-150SP	N/a	300mm X 150mm	Diamond or Carbide

Electrical Supply: 220v 50Hz, 110v 60Hz

Wide Range of machines to suit all scribing applications.

Marktronic™ 3000 Scribing Models

The scribe marking range uses a pneumatically actuated diamond or carbide pin to create a continuous line mark by scribing the mark into the material. The process is high speed, virtually silent and creates a high quality mark on a wide range of materials.



Marktronic™ BenchScribe™ 60-60SP Mark

Marktronic™ 3000 Scribing SP and SDPH Models

The SP range uses a diamond or carbide tip and is ideally suited to marking small to medium characters. The SDPH (Scribing - Deep Pneumatic - Heavy Duty) range features a powerful carbide tip actuator with a robust high torque motor driven X-Y mechanism. Originally developed for VIN marking applications, the 140-40SDPH model is perfect for high speed, deep marking applications.



Marktronic™ InScribe™ 140-40SDPH Mark

Integration Features

Our scribe range control units provides many interfacing options and modes of operation. The controllers 24v digital input/output port features 8 inputs and 6 outputs. These can be programmed using a simple scripting language for custom machine control. The 2 x RS232 serial ports may also be configured for downloading marking data and controlling the marking system. In addition, an optional TCP/IP Ethernet port allows multiple systems to be controlled from a central server.

Wide Range of Options

Hardware, software and after sales options ensure the Scribe marking range meets your exact needs.



InScribe™ 140-40SDPH



Professional Custom Designed Systems



3000 series controller



PRYOR Marking Technology

Egerton Street, Sheffield S1 4JX, UK Tel: +44 (0)114 276 6044 Fax: +44 (0)114 276 6890

Email: enquiries@pryormarking.com Web: www.pryormarking.com

Pryor Marking Technology Group Companies

Absolute Vision Ltd - UK web: www.absolutevision.co.uk

Mecagrav Industrie S.A. - France web: www.mecagrav.com

Marks Pryor Marking Technology PVT. Ltd - India web: www.markspryor.com

Monode Pryor Traceability LLC - USA web: www.monodepryortraceability.com

Pryor provide a single source of supply for marking products, services and support. Manufacturers of a complete portfolio of marking goods, Pryor's success is built on providing solutions for all types of marking applications ranging from those requiring only a simple hand operated punch through to fully integrated computer controlled turnkey marking systems. Supported by a network of distributors worldwide, Pryor offer a total commitment to quality and service.

The difference is Pryor knowledge

www.pryormarking.com