

A NEW CONCEPT for a self-contained solution, which is easy to integrate:

"marking head + control unit + marking software" all in one unit.

USAGE: ideal solution for marking metal and plastic parts in different conditions and in a variety of forms.

(automotive, mechanical, steel industry, electro-mechanical, ...)

ENVIRONMENT: conceived for industrial integration:

- into production or automatic assembly lines,
- into automatic or semi-automatic test stations.

EASY TO INTEGRATE

- The control unit is integrated into the marking head: no need for an electrical cabinet or complex wiring.
- The integrated marking software allows independent operation.
- The integrated screen makes it easy to view and to program the machine.

ECONOMICAL

- **Reduction of integration costs:**
 - **less space needed:** the control unit is integrated into the marking head.
 - **reduced programming time:** the integrated marking software allows each self-contained program to be selected.
- **Simplified mounting using T-slots.**
- No consumables.
- 24V DC electricity supply.

EASY TO PROGRAM

Several options for data entry:

- External keyboard, (delivered with the machine)
- Optional PC driven Windows® software
- Production Line Control (PLC) via RS232 & RS485 connection
- Bar code reader

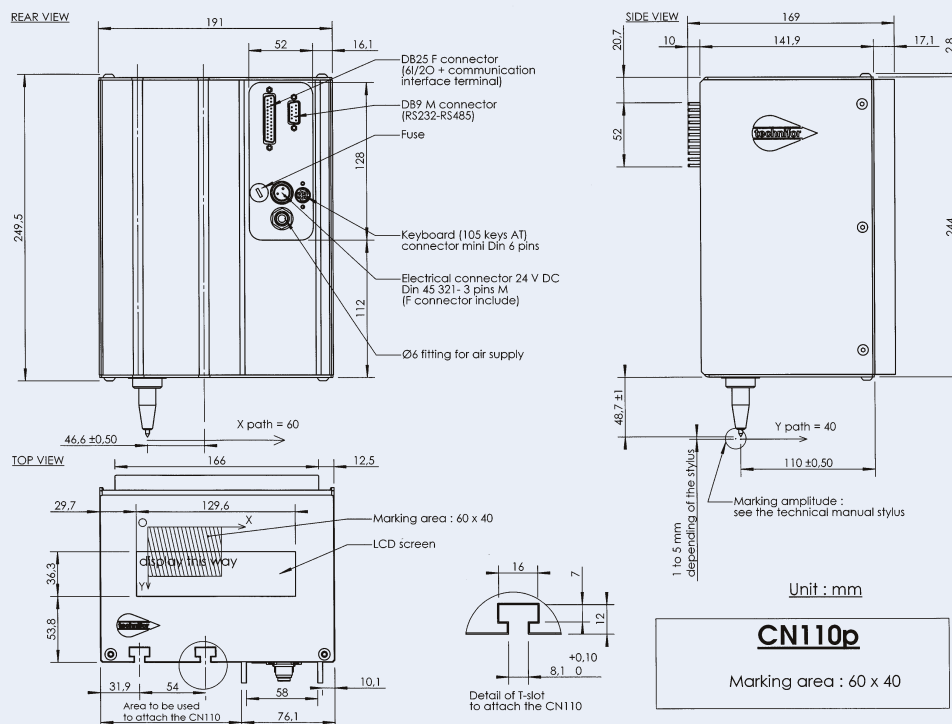


INTERNAL SOFTWARE CAPABILITIES

- Creation/Modification/Back-up of the marking programs.
- Calculation of variable data: date and time (available in different formats), shift code, serial numbers.
- Management of the text style:
 - choice of font characters (standard, OCR, 5x7, ...),
 - selection of logos,
 - compression, spacing and automatic centering of the characters,
 - linear, angular, radial, inclined, inverted and mirrored marking.
- Downloading of fonts and personalised logos.
- Management of input/output.



A MARK WHICH DEFIES TIME



Accessories:

- Standard stylus, extended stylus
- Increased amplitude stylus
- Protective bellow (reduction of the marking area to 40x40mm)
- Height adjustment system (± 22mm)
- Supply 230V AC / 24V DC - 3A
- Supply 115V AC / 24V DC - 3A

Environment:

- Dimensions (lxhwx): 191x169x250mm (excluding stylus)
- Weight: 5.5Kg
- Electrical supply: 24V DC ±10% (3-points DIN 45 321 connector)
- Power: 80W
- Air supply: running pressure from 5,5 to 6bars nominal with pneumatic fitting Ø 6 mm, 8bars maximum.
- Operating temperature: +5 to +40°C

Norms:

- Directive "Machine" 98/37/CE
- Directive "Electro-magnetic Compatibility" 89/336/CEE
- Low voltage directive "Electrical equipment" 73/23/CEE

Control unit:

- Integrated into the marking head
- Processor: 32bits, memory capacity: 70Ko
- Data entry by:
 - External keyboard 105 AT keys (supplied with the CN110)
 - PC with Windows® software
 - PLC via RS232 & RS485 connector (DB9 connector)
 - External computer systems via RS232 & RS485 connection
 - Bar code reader via RS232 & RS485 connection (optional)
- Selection of stored files:
 - with the 105 AT key keyboard
 - with a 6 In/2 Out board (on the DB25 connector)
 - with a serial connection RS232
- Communication interface (on the DB25 connector)
 - start of marking
 - end of cycle
 - reset
 - machine ready to start marking

Options:

- Downloading of fonts or extra logos
- Standard marking software for PC (Windows®) T101W
- Reception of data (UCBARCODE)



114, quai du Rhône - F-01708 MIRIBEL Cedex
Tel +33 (0)4 78 55 85 50 - Fax +33 (0)4 78 55 85 60

E-mail: tf@technifor.com

Web site: www.technifor.com