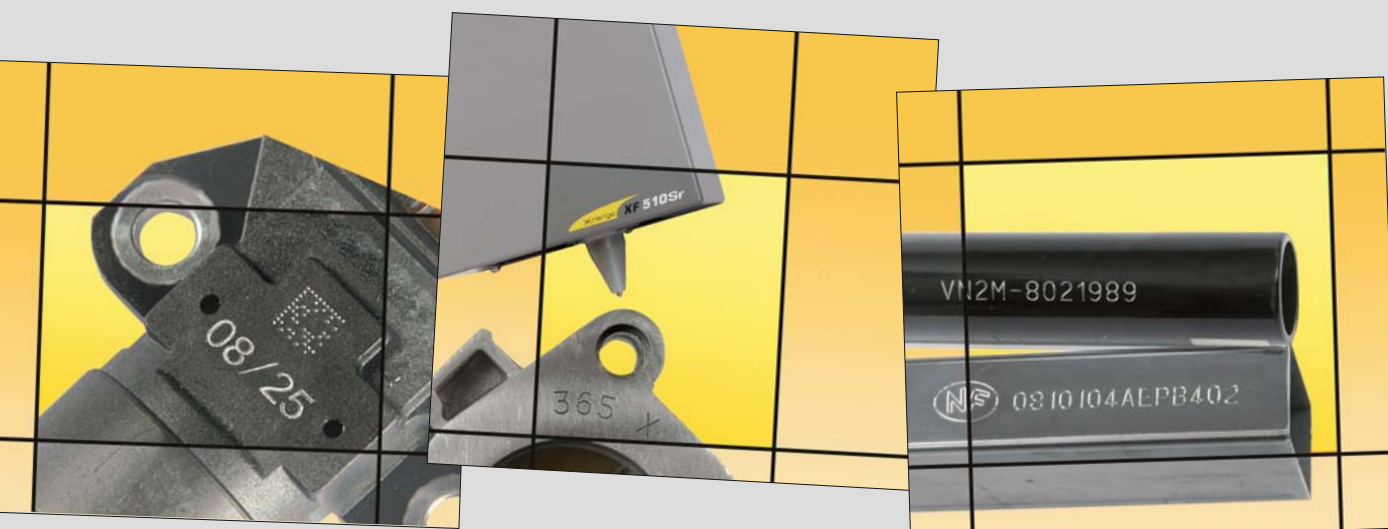


X-range

Scribing Marking Machines



XF510r

XF510 Gr
XF510 Sr
XF510 Dr

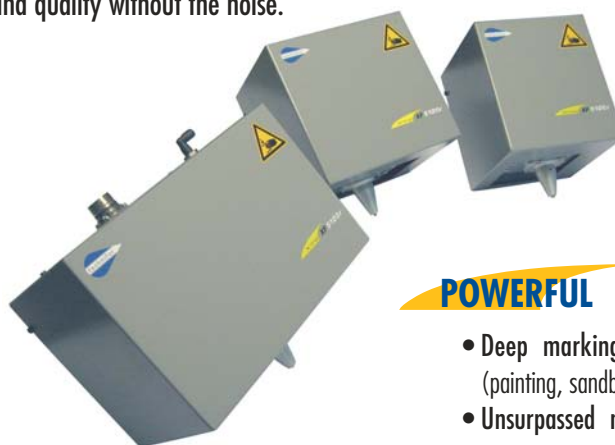
X-tra Efficient, X-tra Silent



A MARK WHICH DEFIES TIME

XF510r Marking Head

The XF510r scribing solution offers speed, precision and quality without the noise.



SILENT AND FAST

- **Scribing technology:** Very silent process, even on the most difficult materials (hollow part, sheet metal...). No soundproof enclosure necessary
- **Aesthetic result:** Clear, legible and precise marking of text and logos
- **Excellent marking quality,** ideally suited to mark Data Matrix™ codes

EASY TO INTEGRATE

- Can be integrated for operation in any position
- A range of compact machines
- 3 marking areas available:
A solution for each application



INDUSTRIAL

- **Tough and reliable guide system:** designed to meet fast-paced production rates
- **Sturdy construction:** used in any type of industrial environment, even in the harshest conditions

UC500 Control Unit

A new generation of electronics with user-friendly and innovative functions.



INTUITIVE

- **Easy to use:** T05 on-board software with icons and pop-up help.
- **A wide and backlit screen:** for better display.
- **Graphic preview:**
easy text verification and adjustment.
- **Multilingual and compatible with any keyboard.**
- **Universal power supply:** for connection in any country.

INNOVATIVE

- **Bi-directional marking:**
for time-saving cycles.
- **USB connection:** flexible and easy for software updates; files; logos and fonts transfers; system back-up.
- **Ethernet connection.**



POWERFUL

- **Deep marking:** before or after treatment (painting, sandblasting, shot-blasting...)
- **Unsurpassed marking speed** with scribing systems
- **Permanent marking** of all types of materials, of any shape

Product Highlights

- Increased productivity
- Reduced costs
- Ease of integration
- Easy to use
- Deep, permanent and quality marking

INTERACTIVE

- **Connectivity:** RS232, USB, Ethernet connections and embedded 8 Input/4 Output card: data transfer, selection of the file to be marked etc...
- **Reception of marking data** via keyboard entry, bar code reader or other software modules.
- **Communication terminal interface:** start marking, cycle complete, cycle stop, machine ready, marking in progress.

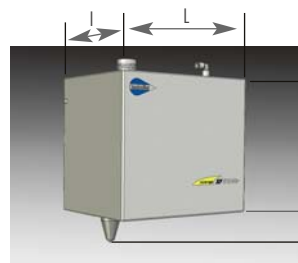
TRACEABILITY ORIENTED

- **Easy to program:**
fixed text, variable, angular, radial, DataMatrix™ marking, link to databases etc...
- **High memory capacity** up to 1000 marking files.
- **Flexible control:** linked to a PC, PLC or on its own.

Technical Characteristics

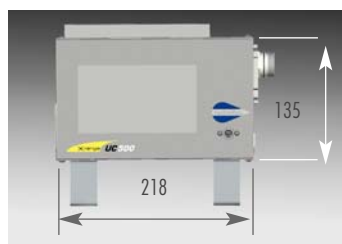
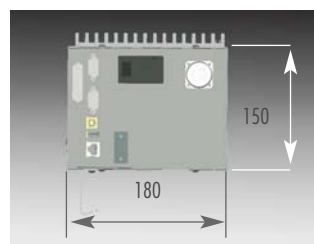


X=40 Y=50
X=80 Y=50
X=160 Y=50



| Dimensions | Cr | Sr | Dr |
|------------|-----|-------|-----|
| L | 182 | 222 | 302 |
| l | | 167 | |
| h | | 199.5 | |
| h + NA1 | | 250 | |
| h + N2 | | 233.5 | |

Dimensions in mm



TIF, 2D, 3D drawings, integration guides ... available on request

XF510Cr / Sr / Dr Marking Head

| | Cr | Sr | Dr |
|---------------------|-------------------|-------------------|-------------------|
| Marking area mm | 40 x 50 | 80 x 50 | 160 x 50 |
| inches | 1.57 x 1.97 | 3.15 x 1.97 | 6.30 x 1.97 |
| Character height mm | from 0.5 to 49.5 | from 0.5 to 79.5 | from 0.5 to 159.5 |
| inches | from 0.02 to 1.95 | from 0.02 to 3.13 | from 0.02 to 6.28 |
| Weight Kg (Lbs) | 9 (18) | 10 (20) | 11.5 (23) |

UC500 Control Unit

- 5.7" backlit screen
- RS232 - USB - Ethernet - on-board 81/40
- External keyboard provided
- T05 integrated marking program (graphical preview)
- Weight: 3.9 Kg (7.8 Lbs)

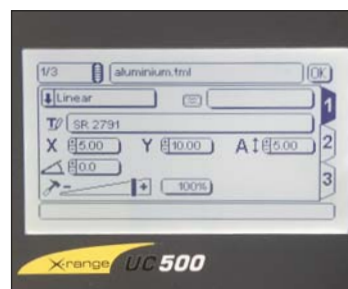
Environment and power supply

- Power supply: 90 - 230 VAC
- Power: 150 VA
- Air pressure: from 1 to 6 bars (87 psi) (non lubricated dry air)
- Operating temperatures: +5 to +45°C (41F to 113F)

Safety and protection

In accordance with the following directives :

- "Machines" 98 / 37 / CE
- "Electromagnetic Compatibility" 2004 / 108 / CE
- "Electric Devices" 2006 / 95 / CE
- "DEEE" 2002 / 96 / CE



Marking File



Speed Settings

Options and accessories

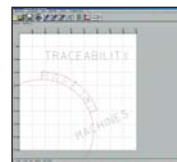
90° elbow connector



Protective shutters



Windows® T500W
Marking Software



Stylus range



Protective boot
(except XF510Dr)



UC500 Rack option
(5U 19")



Head-UC500 cable
(3m, 6m, 10m, 15m)
standard and robotic



Height setting system
(± 22mm)



Column frame



Applications

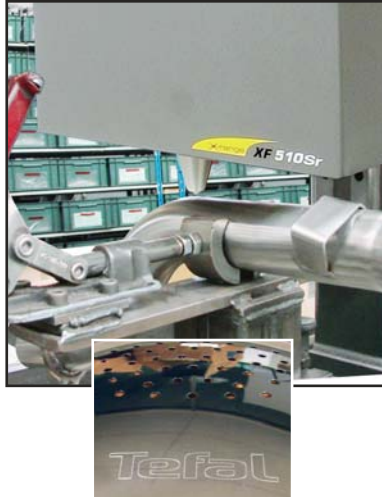
The XF510r range brings a Traceability Solution to each industry sector:
Automotive, Aerospace, General Engineering, Motorbikes and Cycles, Metal and Plastic processing...

X-tra Silent

The X-Tra marking quality you need...



Text and logo marking
without noise



Aesthetic marking



Data Matrix™ code marking
on any type of part

X-tra Efficient

... with the X-tra speed you want



Before paint / After paint
Deep marking



Integration on production line



Car, motorbike, cycle frame
traceability, VIN numbers ...



A MARK WHICH DEFIES TIME

GravoTech Marking SAS
114, quai du Rhône - F-01708 MIRIBEL Cedex
Tel +33 (0)4 78 55 85 52 Fax +33 (0)4 78 55 85 54
E-mail : tf.dvfrance@technifor.com
www.technifor.com

Technifor is a registered trade mark of GravoTech Marking SAS

